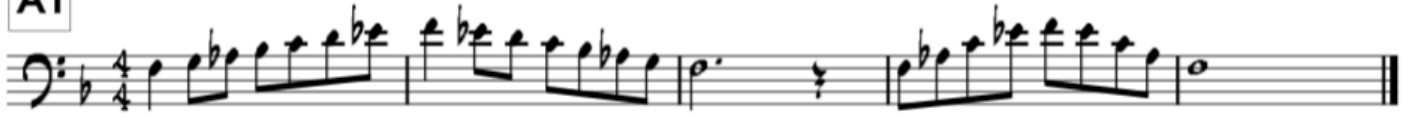


F Dorian Scale

A1



Bb Mixolydian Scale

A2

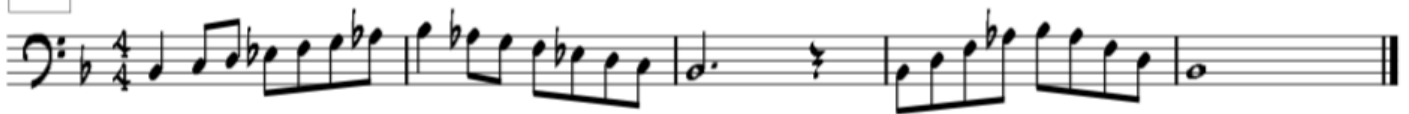


Chart Excerpts

B1

UP SWING $\text{♩} = 176-192$



B2

SALSA $\text{♩} = 160-172$

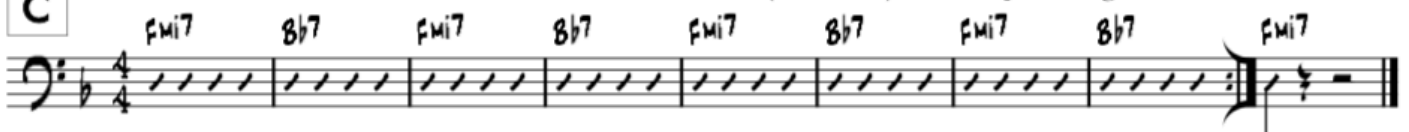


Improvisation (optional)

C

ROCK $\text{♩} = 124-138$

► Use notes from the F Dorian scale (see above) when improvising.



Play-Along tracks for improvisation can be found on the Auditions (Jazz) page at www.mthebronmusic.org under the ENSEMBLES - JAZZ tab.

Chart Excerpt

B STRAIGHT EIGHTHS ♩=160

The first line of musical notation is in bass clef with a 4/4 time signature. It contains eight measures of music. The notes are: G2 (marked with a '5' below), A2, Bb2, C3, D3, E3, F3, G3. The first measure has an accent (^) over the G2. The second measure has an accent (^) over the A2. The third measure has an accent (^) over the Bb2. The fourth measure has an accent (^) over the C3. The fifth measure has an accent (^) over the D3. The sixth measure has an accent (^) over the E3. The seventh measure has an accent (^) over the F3. The eighth measure has an accent (^) over the G3. There are slurs under the first four notes and the last four notes. A 'rit' marking is present below the first measure.

The second line of musical notation is in bass clef with a 4/4 time signature. It contains eight measures of music. The notes are: G2 (marked with a '5' below), A2, Bb2, C3, D3, E3, F3, G3. The first measure has an accent (^) over the G2. The second measure has an accent (^) over the A2. The third measure has an accent (^) over the Bb2. The fourth measure has an accent (^) over the C3. The fifth measure has an accent (^) over the D3. The sixth measure has an accent (^) over the E3. The seventh measure has an accent (^) over the F3. The eighth measure has an accent (^) over the G3. There are slurs under the first four notes and the last four notes.